

MPLAB IDE v.8.63 INSTALLATION GUIDE

-All projects and test programs for Bolt 18F2550 system were developed using MPLAB IDE v.8.63 and C18 v.3.40. However, you may install as well another versions of both programs.

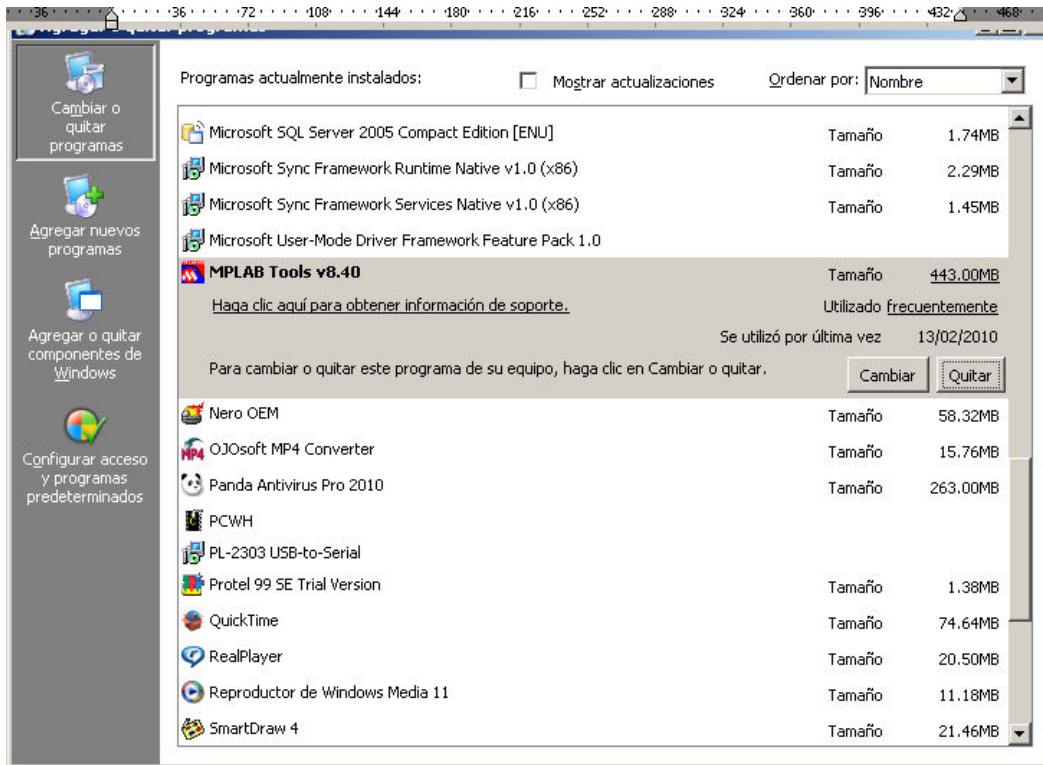
-Please download MPLAB IDE from this link, and choose v.8.63. If the link do not work, please copy and paste in your internet browser.

http://www.microchip.com/stellent/idcplg?IdcService=SS_GET_PAGE&nodeId=1406&dDocName=en023073

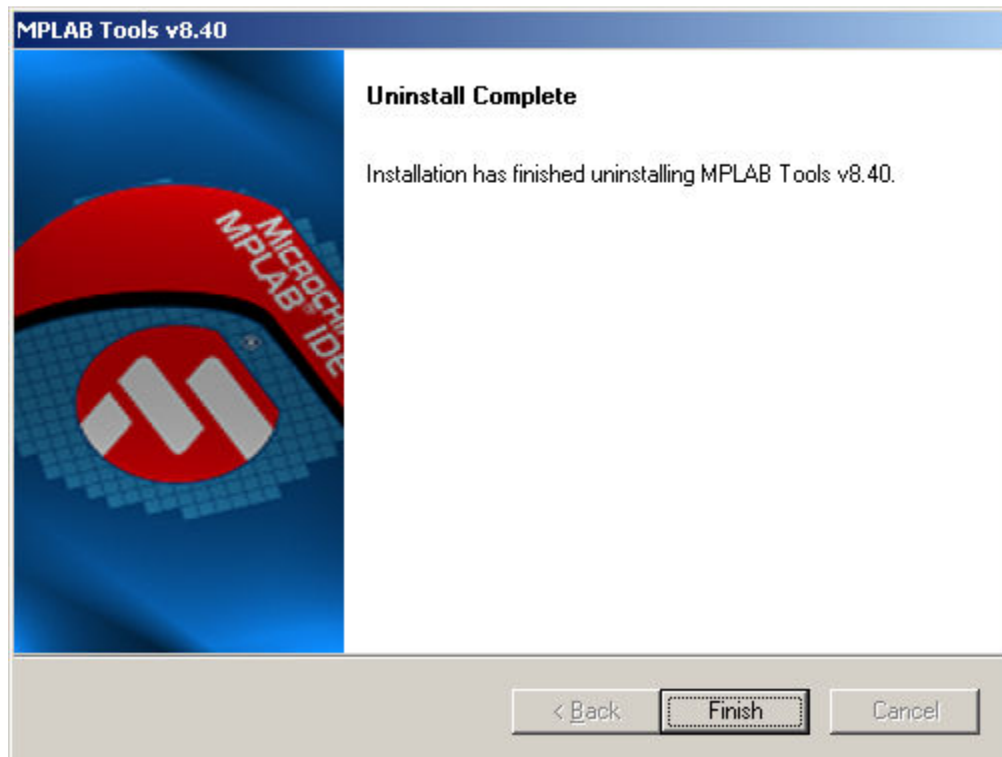
The downloaded folder should look like this:



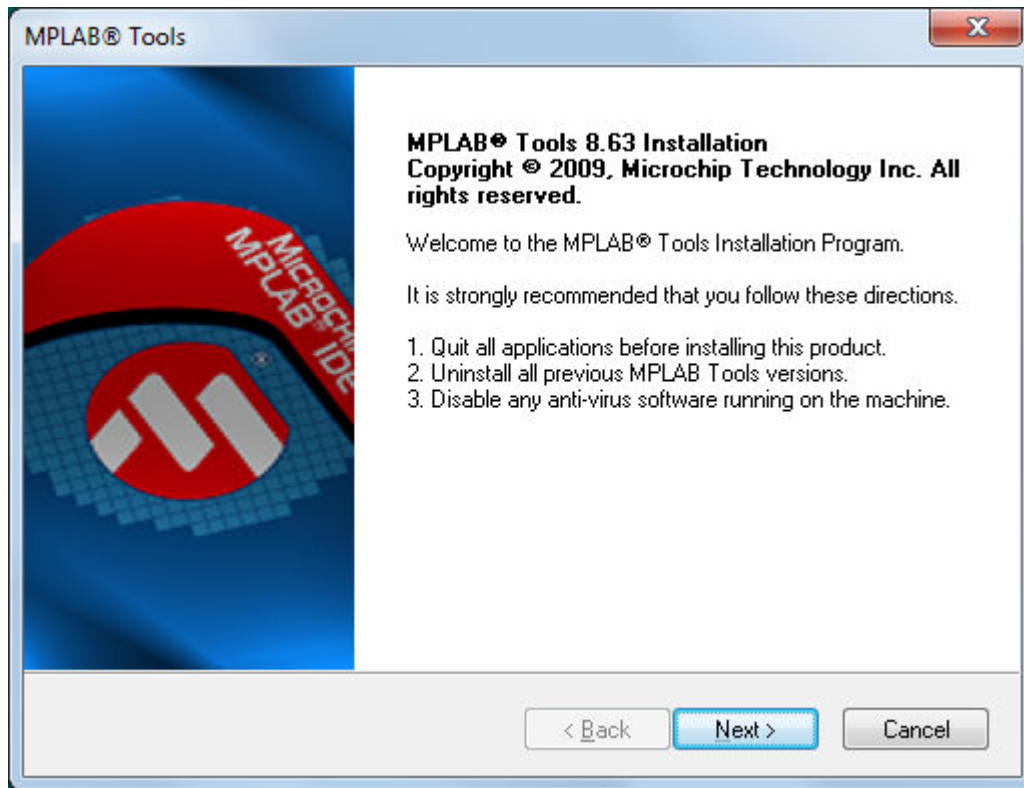
If you have a previous installation of MPLAB, uninstall it:



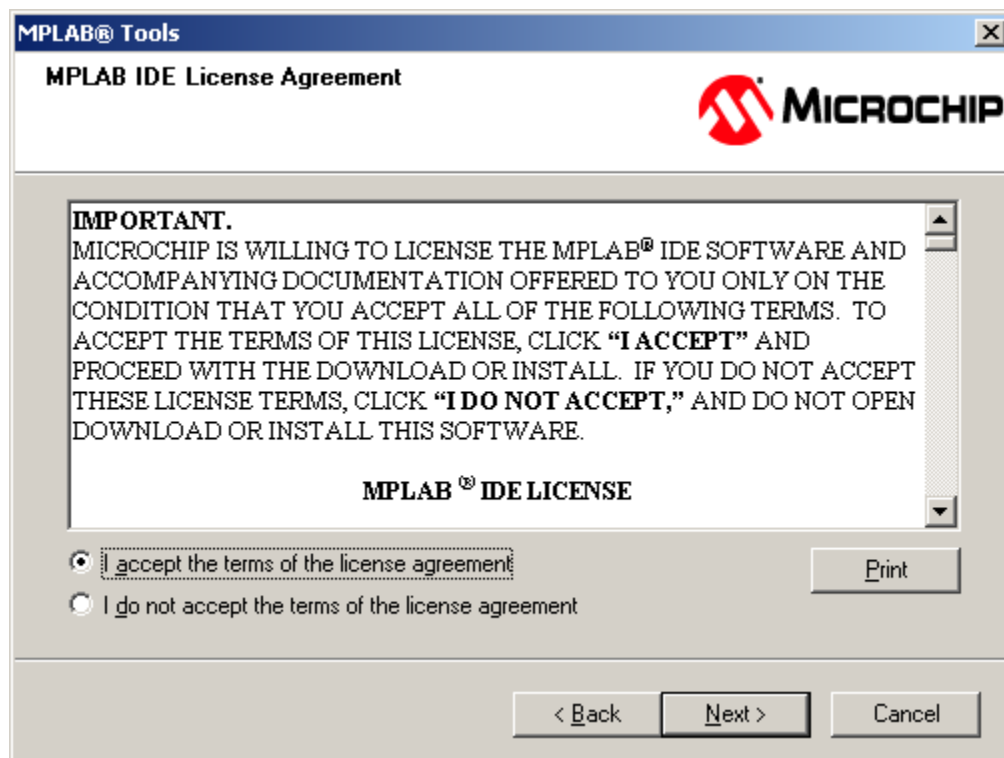
Make sure that uninstall is complete:

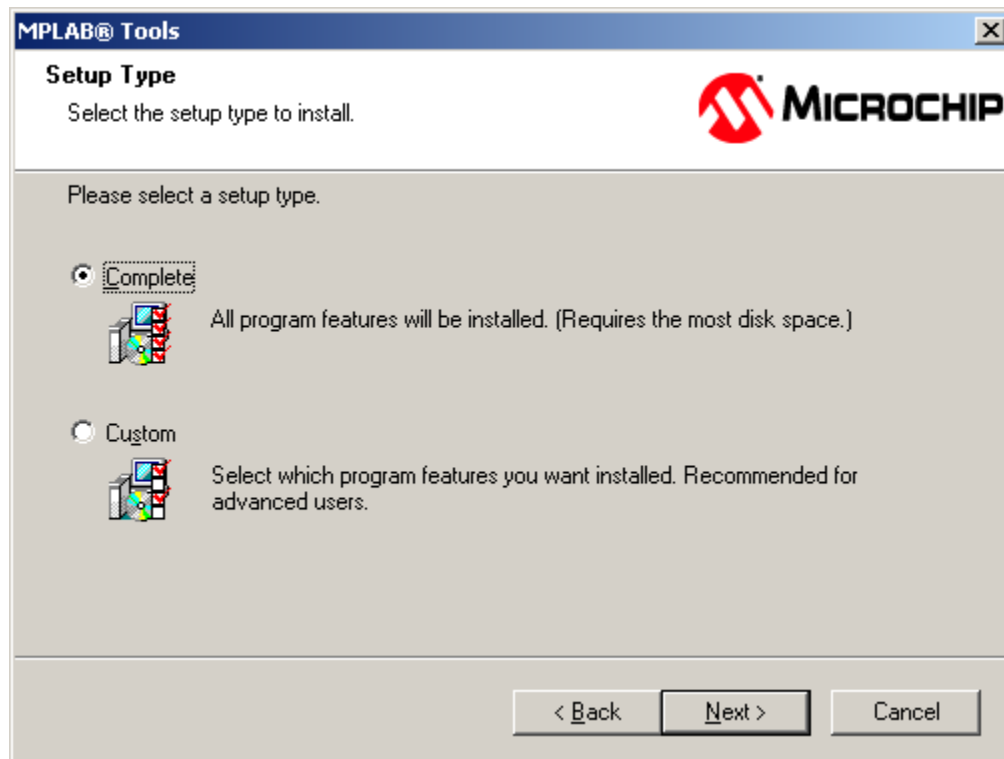
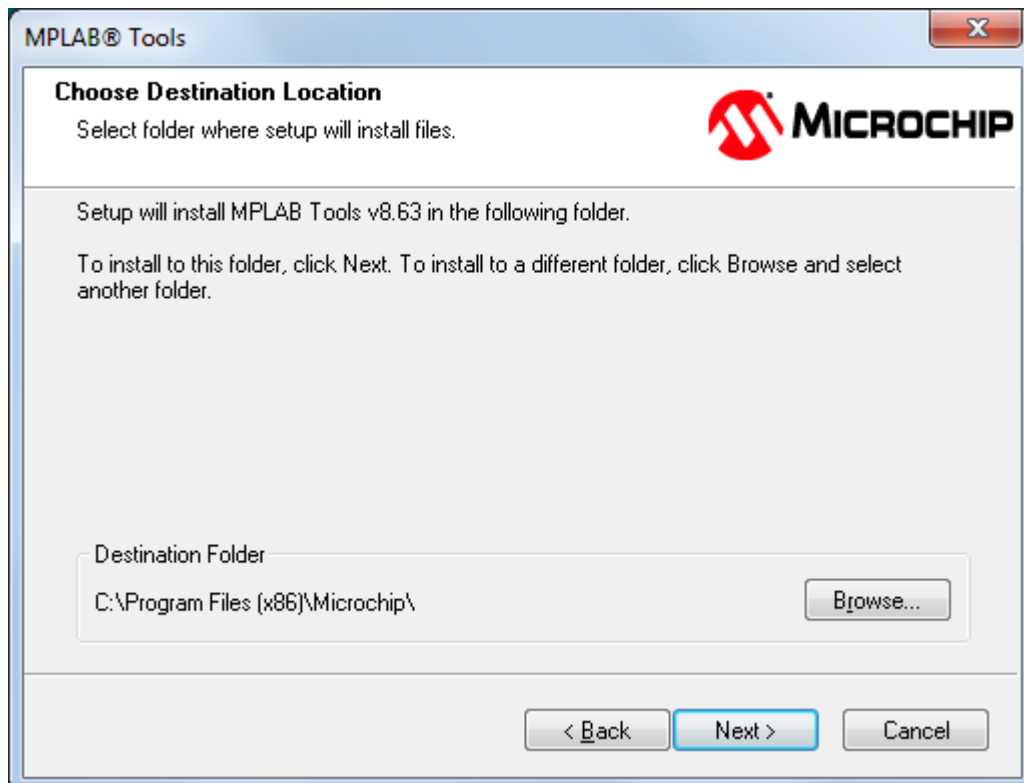


Execute installation program of MPLAB IDE v8.63 “setup.exe” (Setup launcher)

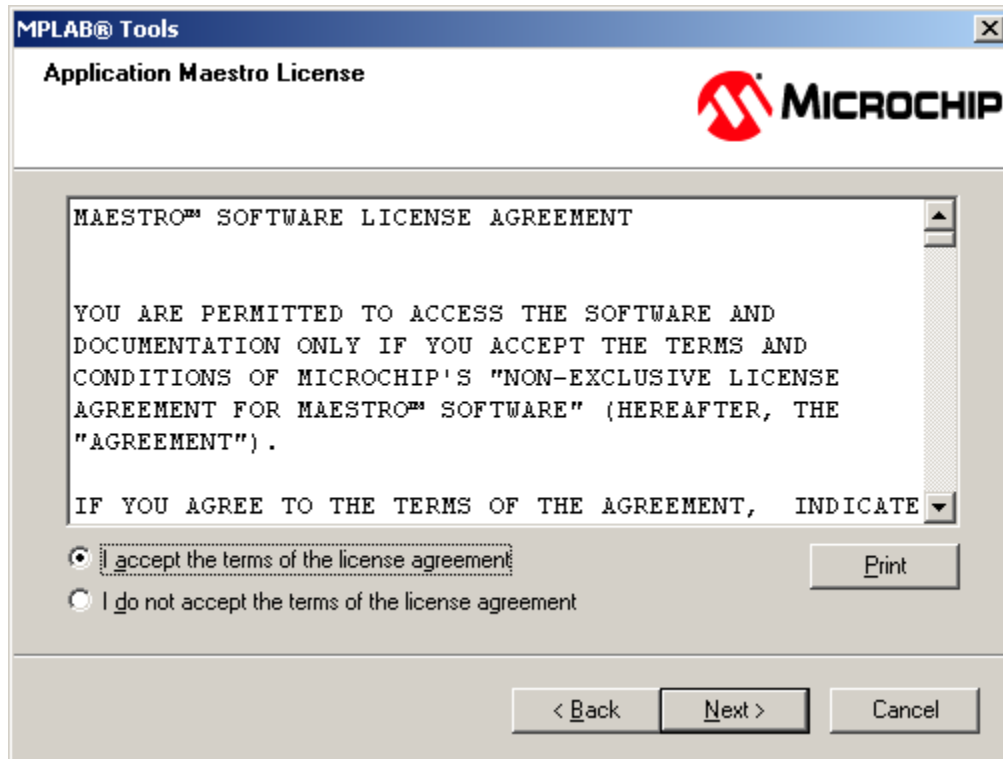


Read this license agreement and select “I accept...”:

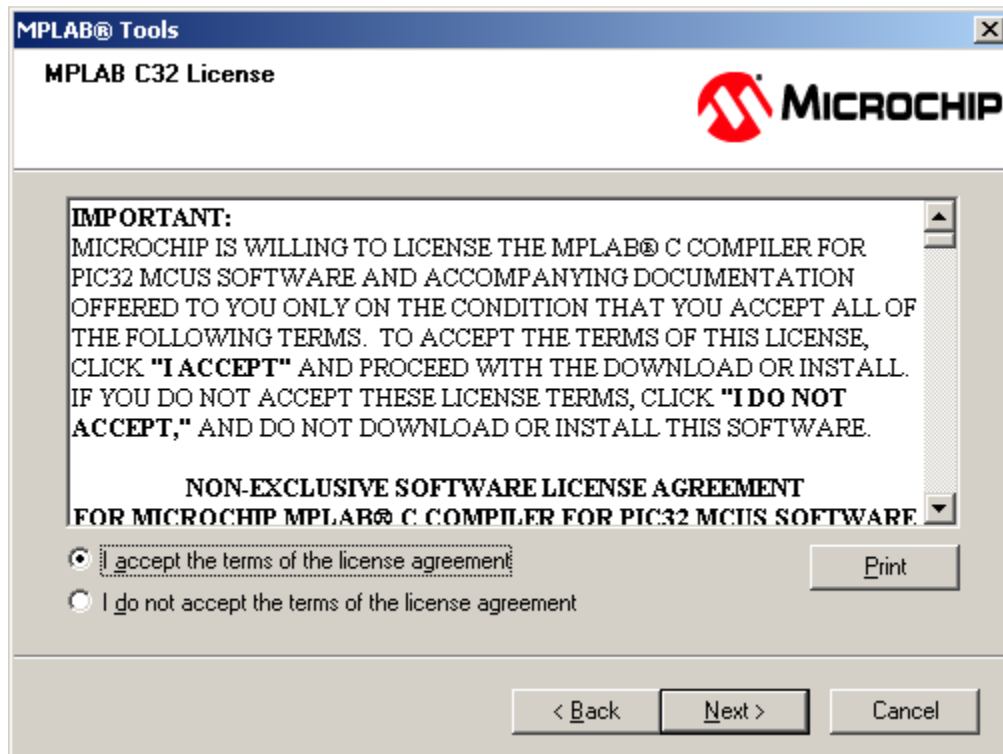


Select install “Complete”:**Do not modify the installation path and click on “Next”:**

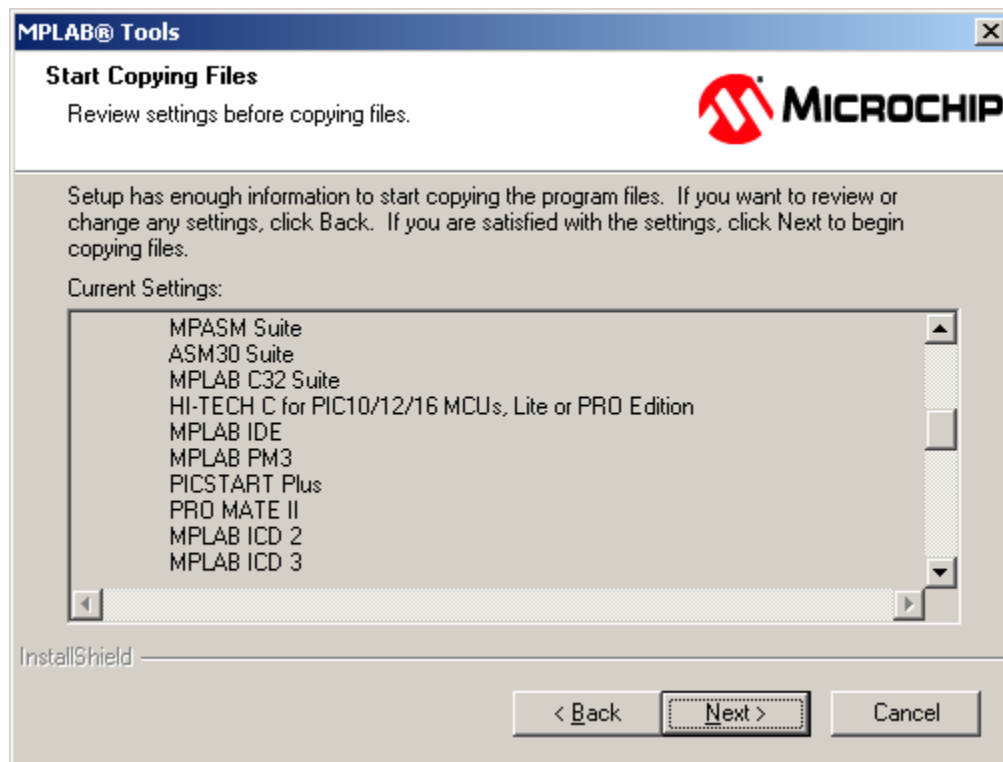
Read this license agreement and select “I accept...”:



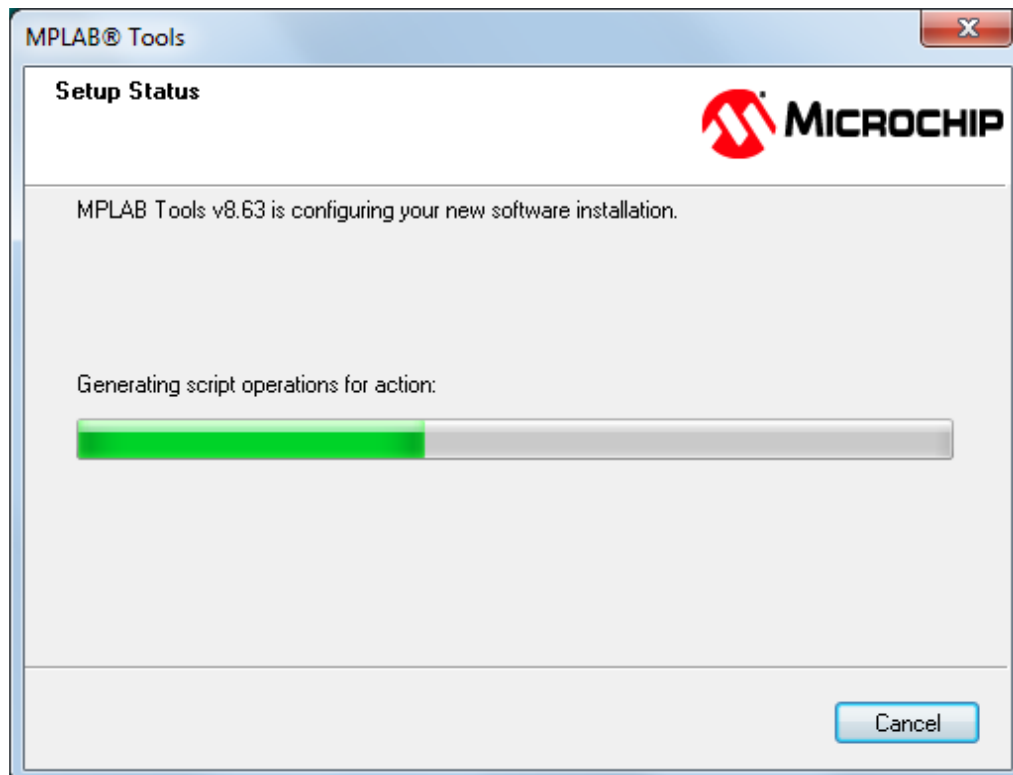
Again, read this document and select “I accept...”:



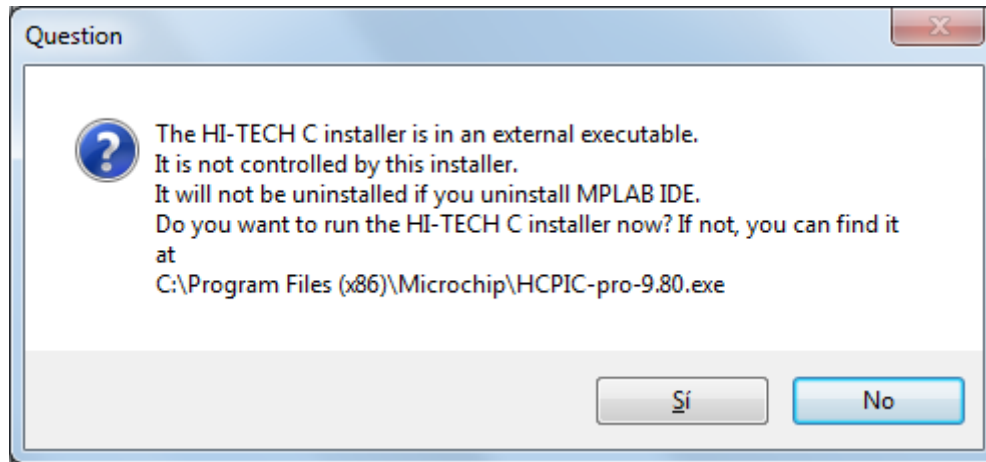
This window shows the components of MPLAB IDE that will be installed. HiTech compiler is also included. Do not modify anything and click on “Next”:



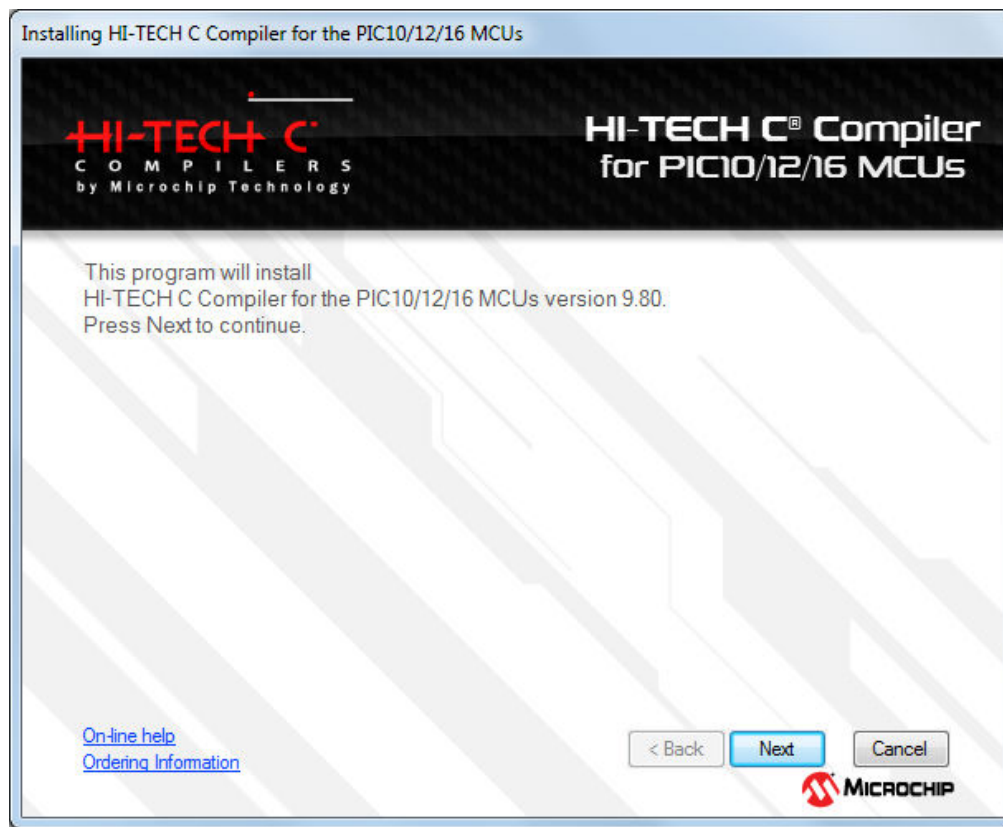
Installation process begins. Wait until it is completed:



Here, you are asked if you want to install HiTech compiler v.9.70. This compiler can coexist with other compilers you may use, like C18 or CCS. Select option “Yes”.



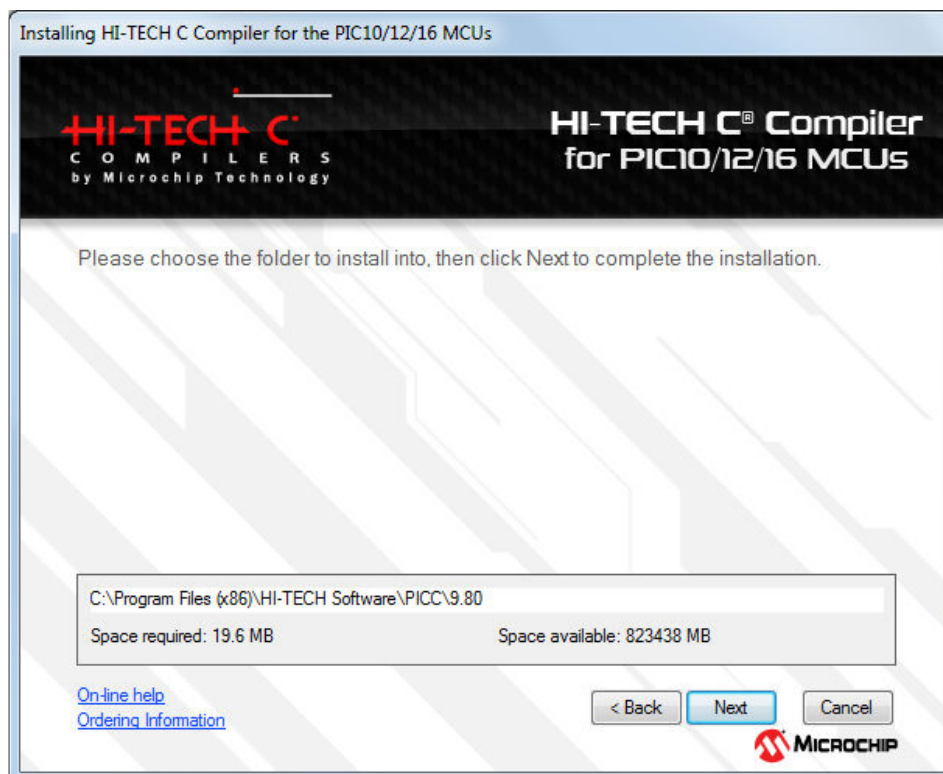
Installer of HiTech compiler will be executed, click on “Next”:



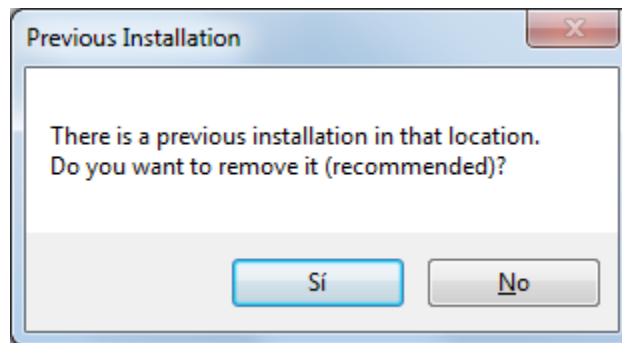
Read license agreement, select “I accept” and click on “Next”:



Do not modify proposed path and click on “next”



If there was a previous installation of HiTech you are asked if you want it removed. Click on “Yes”



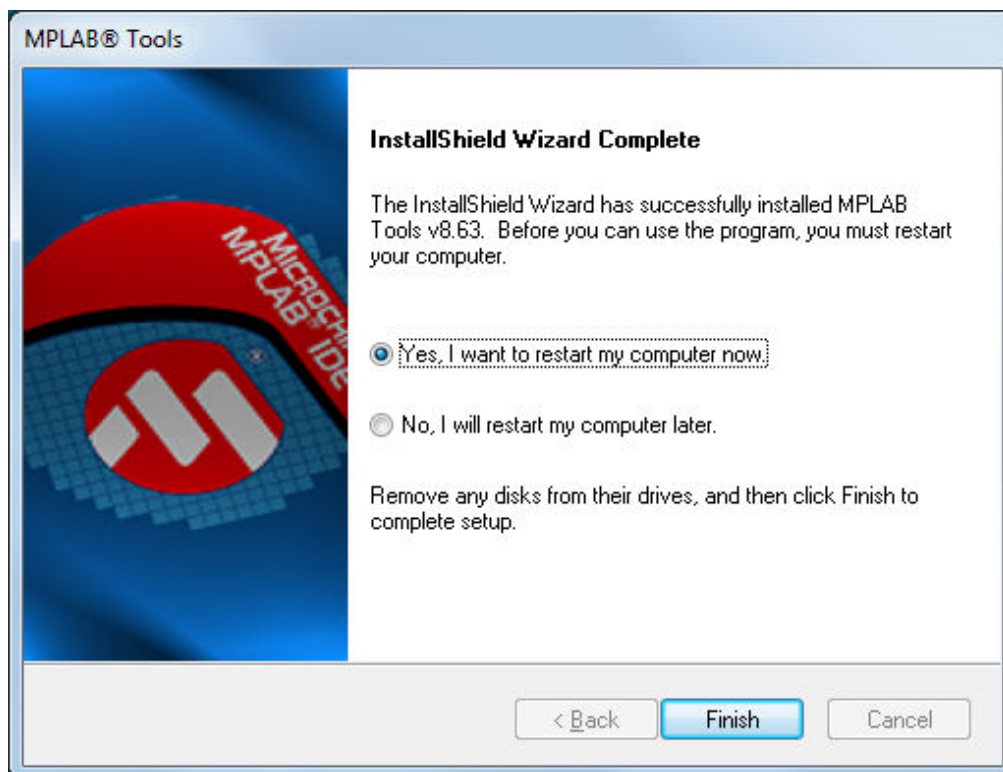
Select “English” as language to use and click “Next”



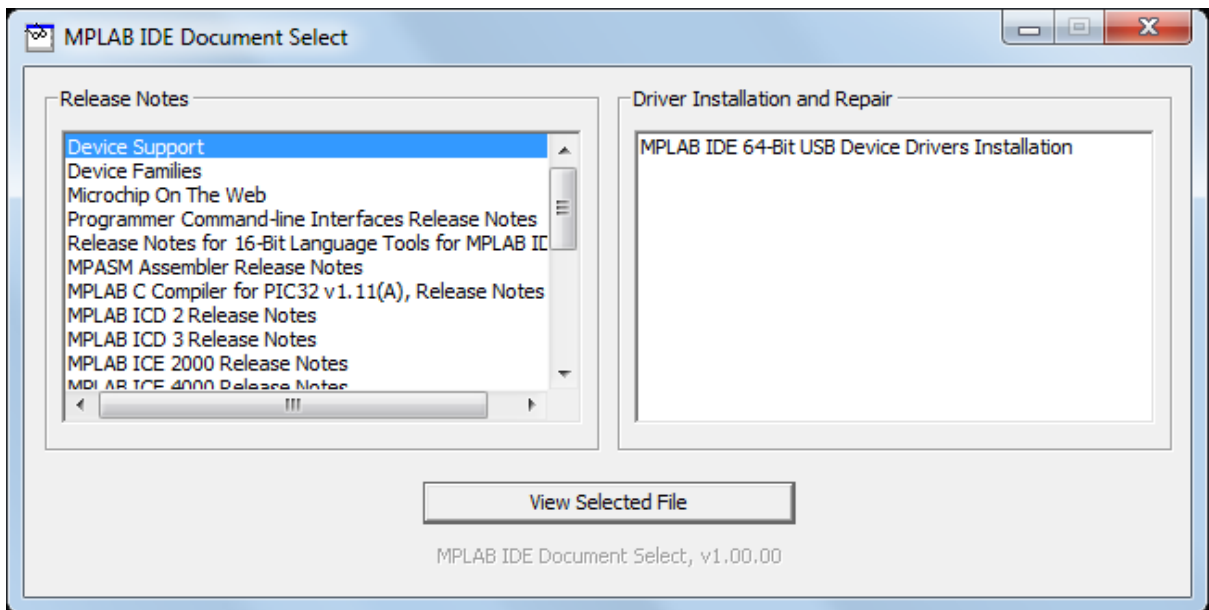
Installation of HiTech compiler is finished. Click on “Finish”:



Here, you must restart your computer. Select “Yes” and “Finish”:



After restart, you will see a window like this with all documents available to read. Just close this window with a click on the upper right corner:



AT THIS MOMENT, YOU WILL OBSERVE AN MPLAB IDE DIRECT ACCESS ICON IN YOUR PC DESK

CONGRATULATIONS, INSTALLATION IS COMPLETED!

Any question, please contact:

atencionclientes@puntoflotante.net